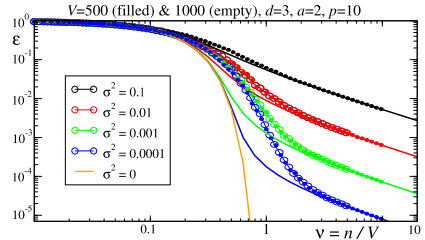
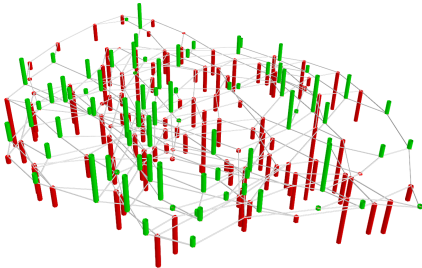


- GP regression: Bayesian method, predicts unknown function values
- We understand how well we can learn on continuous spaces – what about discrete ones?
- Consider functions on graphs, with random walk kernel



- Focus on random graphs with fixed equal degree
- Locally tree-like - use tree approximation?
- Good for learning curves
- Not the whole story for kernel shapes . . .