

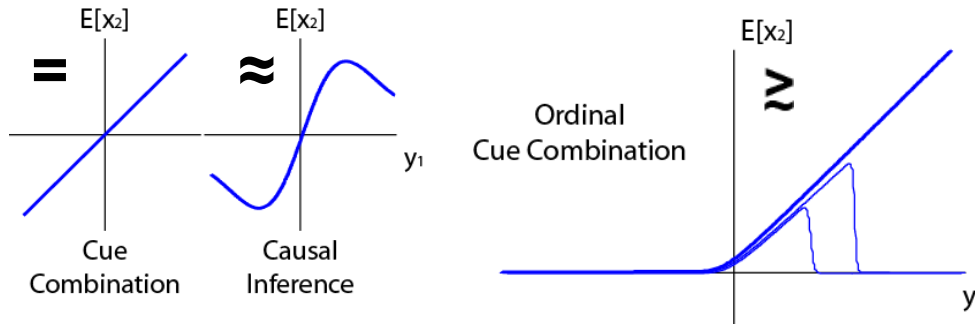
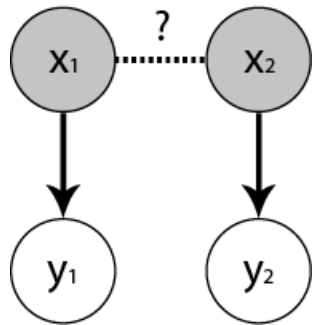


Structural inference affects depth perception in the context of potential occlusion

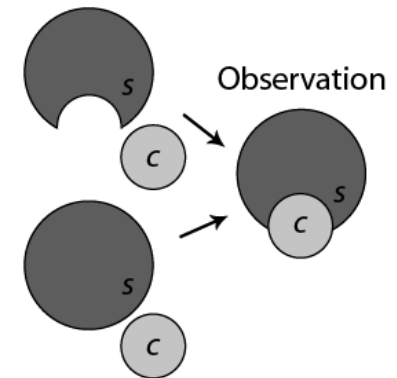
Ian H. Stevenson and Konrad P. Körding

Departments of Physiology and Physical Medicine and Rehabilitation
Northwestern University, Chicago, Illinois, USA

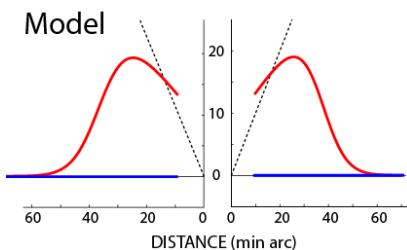
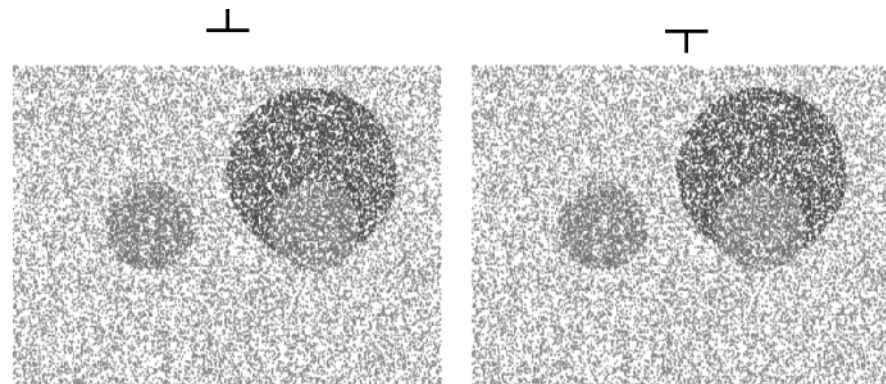
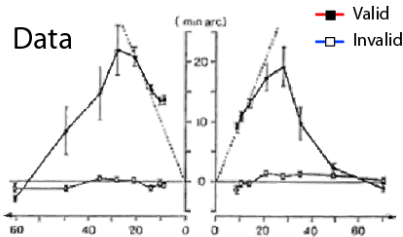
An ordinal model of probabilistic cue combination...



Hidden Structures



Explains depth perception during occlusion...



Nakayama & Shimojo (1990)

